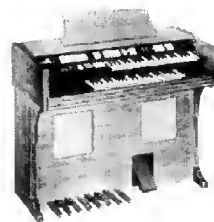


WURLITZER ORGAN

MODEL 4100 SERIES

THE WURLITZER COMPANY . . . DE KALB, ILLINOIS

OWNER'S MANUAL



WURLITZER

Dear Friends:

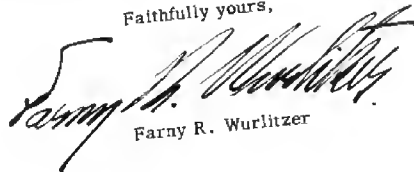
My earliest recollections as a boy are of my father and his quiet spoken references to our family and their background in the world of music. He looked upon this as a heritage - a trust passed down to him through an unbroken family line since the birth of Nicholas Wurlitzer in 1659, who, with his sons first became known as makers of lutes and later violins.

My father came to this country in 1853, and in 1856 founded the company which, today, bears his name and is now over a century old. I feel certain that his leadership played a large part in our success. He made no compromises with quality and this has left its imprint on every man of Wurlitzer.

Nowhere is this more evident than in the Wurlitzer Organs of today. To the inbred skills and crafts of our early pipe-organ days has been added the new horizons of electronic engineering. The result is a complete line of beautiful and versatile musical instruments - a credit to our name.

It is my sincere hope that you will enjoy your new Organ along with the thousands of other satisfied Wurlitzer owners. You may be sure that Wurlitzer, as a company, and through all its facilities, stands ready and willing to serve you always.

Faithfully yours,



Fanny R. Wurlitzer

**OWNER'S
MANUAL**

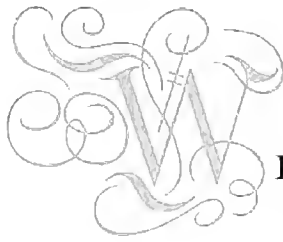
WURLITZER ORGAN

MODEL 4100 SERIES

**TABLE OF
CONTENTS**

<i>Features of the Organ</i>	4
<i>Playing Your Wurlitzer Organ</i>	5
<i>Automatic Controls and Their Operation</i>	8
<i>Keyboard Couplers and Sustain (Percussion) Controls</i>	10
<i>Percussion By Wurlitzer — Keyboard Sustain Controls</i>	11
<i>The Pedal Controls</i>	12
<i>Master Volume Control</i>	12
<i>Care of Your Organ</i>	13
<i>Suggestions for Maintenance</i>	13
<i>Moving Your Organ</i>	14
<i>Accessories</i>	14
<i>Manufacturer's Warranty</i>	15
<i>Special Music</i>	16
<i>High-Fidelity Tone Cabinets</i>	16

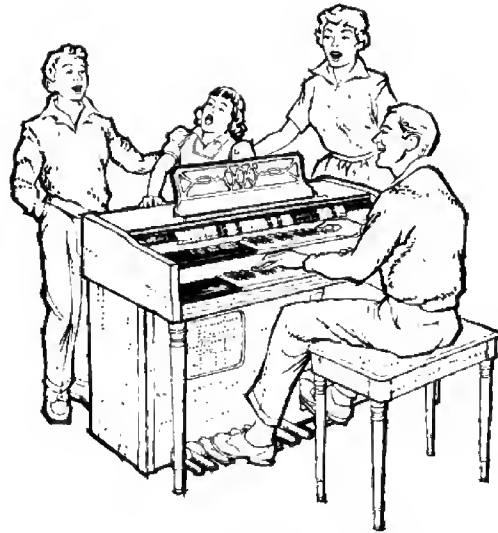
THE WURLITZER COMPANY DE KALB, ILLINOIS



WELCOME

... to the ever growing family of Wurlitzer Organ owners.

With more than a century of experience in designing the finest in musical instruments, Wurlitzer shares your pride of ownership. Never before has an organ been so skillfully built . . . manufactured of the finest materials by the master craftsmen of the famed "Mighty Wurlitzer."



Thrilling Tone

Your new Wurlitzer Organ embodies the most modern developments in organ engineering. It employs a special, newly developed oscillating tube in the exclusive Wurlitzer "Tune-Locked" tone-generating system. Result — an organ of matchless beauty of tone.

Ease of Playing

Ease of playing is built right into your new Wurlitzer Organ — it's fun from the moment you place your fingers on the keys. You'll marvel at the ease with which you can create satisfying, rich music . . . controls are fully automatic and changes in voices can be made with the flick of a finger. Each voice can be played singly or in any combination for your musical enjoyment.

Limitless Range of Musical Expression

As an artist's palette affords a limitless range of hues and tones, so your Wurlitzer Organ offers a glorious range of musical expression. With the Automatic Tone Controls and easy-to-use Percussion, Pedal and Vibrato Controls provided on your Wurlitzer Organ, the variety is limitless. No matter what your preference or selection, you can play on this amazingly versatile Wurlitzer Organ music to suit your every mood — music that is popular or classical, martial or gay, majestic or melodious.

Fine Furniture Styling

The five models in the Wurlitzer 4100 Organ series vary only in one respect — console style and finish. Styled by one of America's foremost designers, your Wurlitzer Organ is handcrafted from the finest woods obtainable, hand-rubbed to satin smoothness. Speaker equipment is contained within the organ console itself, making it easy to install in home, school or church and readily transportable for the professional musician.

Precision Engineered and Precision Built

Every Wurlitzer Organ is a masterpiece of perfection. Quality is controlled rigidly at every step. A stock-pile of approved materials is kept on hand and no substitution of inferior materials in the manufacturing process is ever necessary or permitted. The finest craftsmen assure uniform high quality of *all* parts, including those you cannot actually *see*. Ingenious machines, designed by Wurlitzer, perform complex operations with unfailing precision.

Protect Your Investment

Your new Wurlitzer offers you music's greatest satisfaction—a lifetime of creative enjoyment to explore and experience. You will want to protect your investment in this wonderful new instrument by reviewing this Owner's Manual carefully. It describes the musical specifications of your organ and explains its operation and care. Keep it handy for reference . . . the music compartment of the bench is ideal for easy reach and safe-keeping.

THE WURLITZER COMPANY

FEATURES

WURLITZER ORGAN

MODEL 4100 SERIES

DIMENSIONS OF CONSOLE

46 $\frac{3}{16}$ " wide, 23 $\frac{1}{2}$ " deep,
35 $\frac{3}{4}$ " high

WEIGHT

212 lbs. Approximately

CONTROLS

Pedals

Volume: Soft, Medium, Full
Tonality: Principal, Major Bass
Pitch: Pedal 16', Pedal 8'
Sustain: Off-On
Sustain Medium, Sustain Long

Vibrato: Off-On

Speed: Fast-Slow
Depth: Full-Normal

Keyboard Solo Controls

Upper Keyboard: Solo 16', Solo 8',
Solo 5 $\frac{1}{2}$ ', Solo 4'
Lower Keyboard: Solo 8', Solo 4'

Keyboard Couplers & Sustain

Upper to Lower 8'
Upper to Upper 16'
Upper to Upper 4'
Upper 8' Off
Sustain: Off-On
Sustain Medium, Sustain Long

Power Switch

Off-On

Expression

Balanced Volume Pedal

KEYBOARD VOICES

UPPER

Bourdon 16'	Trumpet 8'
Trombone 16'	Oboe 8'
Flute 8'	Quint 5 $\frac{1}{3}$ '
Diapason 8'	Orch. Flute 4'
String 8'	Violino 4'

LOWER

Melodia 8'	Horn 8'
Cello 8'	Harmonic Flute 4'
String 4'	

AUTOMATIC TONE CONTROLS (UPPER KEYBOARD)

Each control is automatic, permanently labeled — for quick and positive changes of a wide variety of voices.

AUTOMATIC TONE AND SUSTAIN CONTROLS (PEDAL)

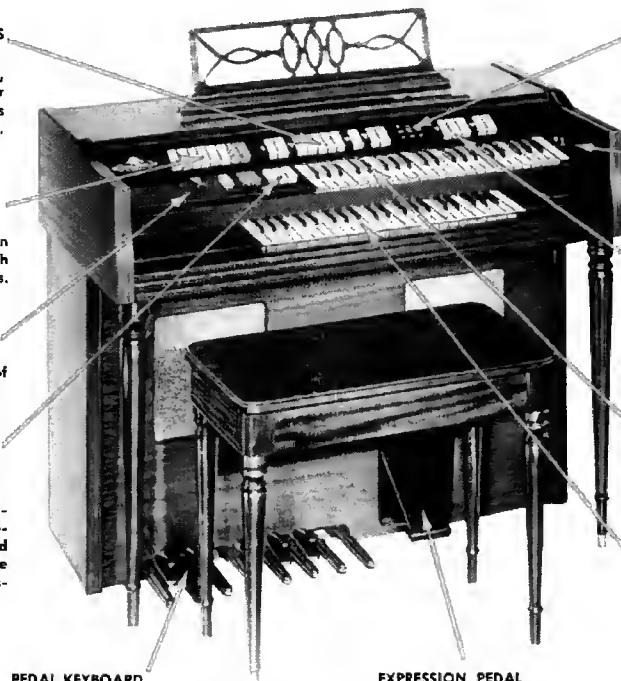
Provide instant changes in volume, tone quality, pitch and sustain of the pedals.

MASTER VOLUME CONTROL

Decreases over-all volume of the organ, if desired.

COUPLER AND SUSTAIN CONTROLS

Further augment and complement the vast tonal resources of the upper and lower keyboards and provide an endless variety of percussion effects.



VIBRATO CONTROLS (SPEED AND DEPTH)

Give an infinite variety of Vibrato combinations for all types of music.

STARTING SWITCH & PILOT LIGHT

Allow about 15 seconds for sound system warmup.

AUTOMATIC TONE CONTROLS (LOWER KEYBOARD)

"Rocker" type, instantly set to provide complete organ voices which can be played singly or in any combination.

UPPER KEYBOARD (SWELL MANUAL)

Inclined and overhanging, bringing keyboards closer together—much easier to play.

LOWER KEYBOARD (GREAT MANUAL)

Features feather-touch control and exceedingly smooth action.

PEDAL KEYBOARD

Thirteen independent bass notes give added body and rhythm for a wealth of organ music.

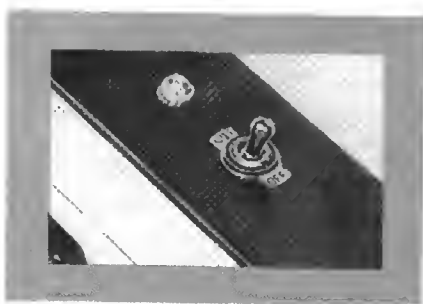
EXPRESSION PEDAL (VOLUME CONTROL)

Provides a full range of undistorted volume from softest whisper to majestic organ.

PLAYING YOUR WURLITZER ORGAN

- To Start
 - Setting Up "Registration"
 - Playing the Keyboards
 - Playing the Pedals
 - Use of the Volume Pedal

The experienced organist will immediately recognize and appreciate the standard controls, specifications and variety of voices of the Wurlitzer 4100 Organ . . . the beginner will learn to play quickly and easily. One of the big reasons it is so easy to play is the Wurlitzer Automatic Tone Control System. At the touch of your finger a Tone Control is tilted toward you and the voice named on it is brought into play. Thousands of delightful tonalities and combinations . . . the blast of trumpets in modern tempo . . . the mellow beauty of pure flutes . . . deep tones of the string bass or popular string ensemble . . . reverent richness of the diapason . . . are all yours to command.



TO START

. . . push the "ON-OFF" switch at the extreme right of the upper keyboard to the "ON" position. Allow about 15 seconds for sound system warm-up. The pilot light next to this switch lights up when the instrument is turned on. Your Wurlitzer Organ operates so smoothly and efficiently that this pilot light has been installed to permit you to ascertain readily whether the instrument has been turned off when it is not being played.

SETTING UP THE REGISTRATION

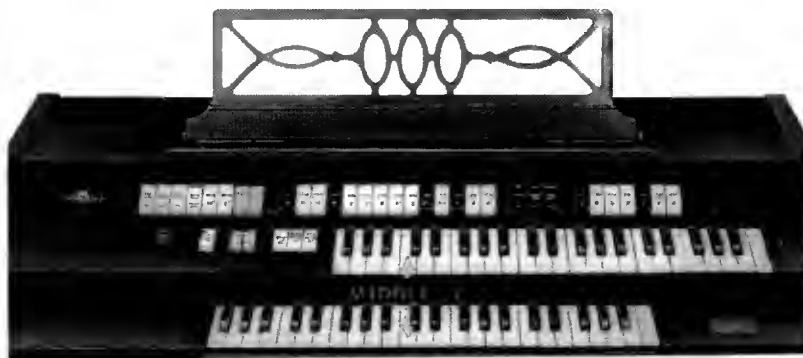
Next step in preparing to play is to set up the registration — selecting and putting into operation the Automatic Controls which will produce the desired tonalities on the upper keyboard, lower keyboard and pedals. "Registration" is to organ music what "orchestration" is to orchestral music. You may select the tone combinations according to the registration on your music (see suggested registration on sample sheet of music in Owner's Kit) or you may select your own combination of tonalities to suit your own musical taste. Keep in mind that the registration given on any piece of music is merely a *suggestion* — one of many possible combinations of tones to use for that particular composition.

You might find some music that doesn't suggest any registration for your particular organ. This doesn't mean that you can't play it. Imagination and an acquaintance with the individual tone controls of your organ are all you need to produce effects that are pleasing to your ear. You will find a more detailed description of the individual Automatic Controls on pages 8 to 12. Carefully study this section with the organ in view. A good understanding of the Controls and their operation will lead to greater ease and enjoyment in playing.

PLAYING THE KEYBOARDS

The two 44-note keyboards, or "manuals" as they are termed in organ language, permit the blending of contrasting tonal colors and allow you to play full harmony as well as solo and accompaniment passages with equal ease and effectiveness. In general, music is played either in full harmony, where all tones are of equal intensity, or as a melody, with softer harmony accompanying it. In playing full harmony, both hands are usually used on one keyboard. In the second case, you select a prominent tonality or voice on one keyboard for the theme or melody and play accompaniment on the other keyboard, using a softer tonality.

On your Wurlitzer Organ, the upper keyboard is inclined and overhangs the lower. This arrangement brings the keys closer together for easy, relaxed playing.



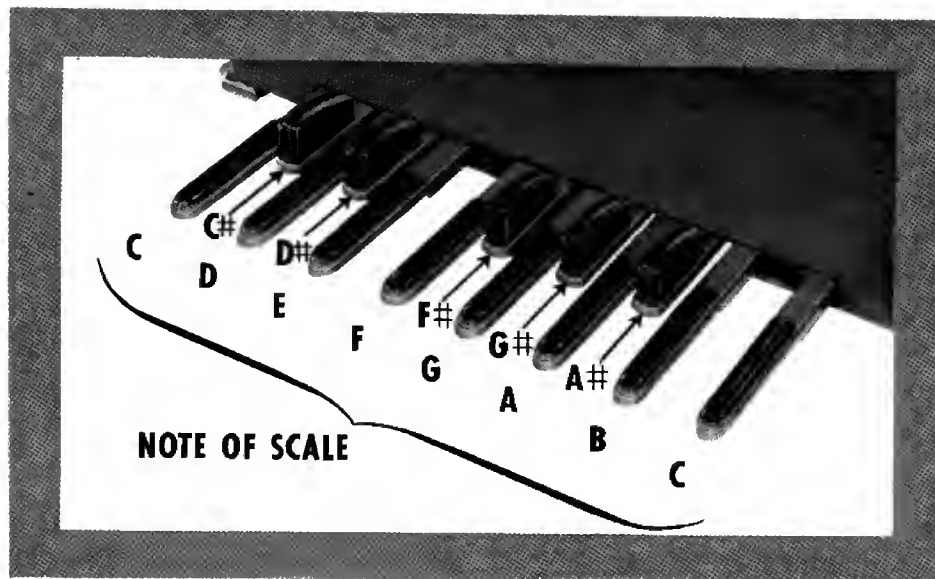
Your Wurlitzer Organ, like the finest pipe organs, has *organ keys* — not piano-type keys. The key action is light and instantaneous. Each note speaks with the speed of electricity. The result is a natural, smooth response.

Your Wurlitzer Organ uses the standard "F" scale in its keyboard arrangement. Each keyboard runs from "F" through "C." The range of the lower keyboard is one full octave below that of the upper keyboard. For purposes of location in reading music, Middle "C" on the lower keyboard is directly below Middle "C" on the upper keyboard. This standard spinet organ keyboard arrangement makes it possible to play the wealth of music arranged for spinet organs.

PLAYING THE PEDALS

One of the easiest parts of the organ to play, the pedals might be compared to the bass viols of the orchestra. In addition to providing the low, bass, foundation tones, the pedals accentuate the rhythm.

Try the pedals with the toe of your left foot. You will notice that their location and size make for quick and easy playing. The 13-note pedal, which permits playing a complete bass octave, incorporates a feature not found on some organs — a second "C" pedal. This makes it very convenient when playing the pedal notes "A" or "B" merely to move your foot a short interval to the upper



"C." This feature will be most appreciated when you are playing popular tunes in a fast tempo where there is often not sufficient time to move your foot from "A" or "B" to the low "C" at the opposite end of the pedal board.

Practice playing the lowest note "C" and then "G"; as well as "C" and "F"; and "A" to the highest note "C" until you become familiar with the spacing. You will play without looking at the pedals in a very short time. For added comfort, you can rest your heel while playing — the pedal board has been positioned at just the right distance from the floor.

The volume of pedal tones in relation to the keyboard tones is controlled separately by the Pedal Volume Controls. Not only are there four degrees of pedal volume, but also two pitches (8' and 16') and two voices (Principal and Major Bass) for each pitch. The Pedal Controls are explained in greater detail on page 12.

USE OF THE VOLUME PEDAL

The Volume Pedal is set in the lower center of the knee panel for ease of operation by the right foot. This pedal, which is used to increase or decrease the volume of the music, affects both keyboards and the pedals.

The Volume Pedal of your Wurlitzer Organ is "balanced" to maintain its position until the pressure of your foot changes it. It is not necessary for your foot to hold the Volume Pedal in position — you can "set it and forget it."

In using the Volume Pedal, the entire right foot rests upon it. To increase the volume of the music, press down gradually with the ball of the foot. To decrease the volume, press down gradually with the heel.



THE AUTOMATIC CONTROLS AND THEIR OPERATION



All of your Wurlitzer Organ Automatic Controls, or "stops" as they are called in organ nomenclature, may be classified as belonging to one of two groups — Tone Controls which produce the voices or tones — and Mechanical Controls which do not produce any tones by themselves but cause the Tone Controls to produce different effects.

Each Wurlitzer Automatic Control is plainly identified with the name of the effect or result produced. The 39 Automatic Controls are color-coded for easy, instantaneous identification:

- White — organ voices, orchestral voices, pedal volume and couplers
- Black — solo, intensity and vibrato controls
- Red — sustain and percussion controls

Before the keyboards will play, at least one white voice control for each keyboard must be brought into operation.

Most of the Automatic Controls are brought into operation by pressing the lower half of the control tablet. To cancel or turn off, press the upper half of the tablet.

Exceptions are the Pedal Voice, Pedal Sustain, Vibrato, Master Volume and Sustain Controls. Pressing the upper half of any of these tablets will change the effect as indicated on the tablet.

Master Volume and Pedal Voice Controls are always automatically in operation when the organ is turned on — their positions determine the result.

MEANING OF NUMBERS ON CONTROL TABLETS

The numbers on the Automatic Control tablets indicate the highness or lowness of tone — or, technically, the *pitch* of the tonal color indicated. The lowest tones come from the Control tablets with the highest numbers (for example, 16'), while the highest tones come from the Controls with the lowest numbers (for example, 4'). This footage designation harkens back to pipe organ terminology — the longer the pipe, the lower the tone. Although there are no pipes in your modern Wurlitzer 4100 Organ, the controls are so marked because this is the organist's unit of measure.

The versatility of any organ is dependent upon the tonal resources (number of individual tonalities plus the number of pitches available) from which you can draw. On the Wurlitzer 4100 Organ, in addition to the wide range of individual tonalities, the pitch range covers 16', 8', 5 1/3' and 4' on the upper keyboard and 8' and 4' on the lower keyboard. Because of this extensive range and tonal color available, the variety possible is limitless.

The basic (unison) pitch is 8' . . . In other words, with only an 8' Control in operation, playing any key will produce the exact pitch of that same key on a piano keyboard. The 16' Control sounds one octave lower and the 4' one octave higher. The 5 1/3' produces a tone a perfect fifth above the key which is struck. . . . It should be played only in combination with other stops and is often used to produce effects associated with theatrical and oriental music. As you experiment with the 5 1/3', you will realize how it can be used to achieve interesting tone coloring in various types of music.

TONE OR VOICE CONTROLS FOR UPPER AND LOWER KEYBOARDS

UPPER KEYBOARD CONTROLS

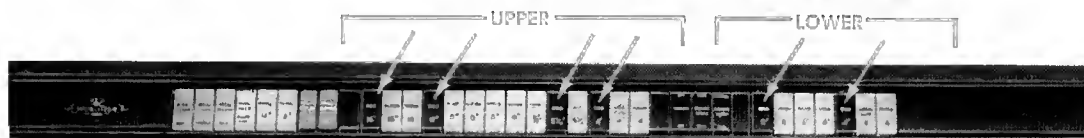


LOWER KEYBOARD CONTROLS



Inherent in the resources of your organ are the four basic families of organ tone: string, flute, reed and diapason. All organ voices fall into one of these four groups. The flute tones are mellow with very little overtone. String tones resemble the string instruments of an orchestra. Reed tones have vibrant, penetrating characteristics. Diapason is the basic organ sound and is characterized by fullness and richness of tone. Each Control is in itself a solo voice — yet, in combination, an infinite variety of other solo voices and ensembles is produced.

SOLO CONTROLS FOR ALL KEYBOARD VOICES



The six black Solo tablets (see above illustration) multiply the dramatic effects possible on your Wurlitzer Organ. These controls make more prominent any selected tonality or pitch — singly or within a combination.

For example, if you feel that the volume intensity of the melody is too soft and should be increased, instead of adding more voices, you can select a solo control or two and the melody will suddenly stand out like a solo instrument in an orchestra.

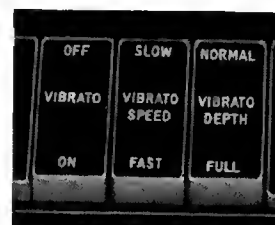
Also, the Solo Control is very useful in another way. When combinations of voices are in use, and you want one particular pitch or tonality to stand out above the others, a Solo Control will do this for you. The 16' Solo Control will bring out a 16' voice, the 8' Solo an 8' voice, the 4' Solo a 4' voice, and so on.

SELECTIVE VIBRATO

The Vibrato, as the name implies, causes the organ tone to vibrate, or pulse, and creates a thrilling effect of warmth and beauty. The selective Wurlitzer Vibrato gives you independent control of both speed and depth of vibrato . . . Speed is the frequency of the pulse — Depth is the amplitude, or extent, of the pulse.

The three Vibrato Controls offer a variety of effects . . . from a delicate shimmering quality to full theatrical throb. The Vibrato (both Speed and Depth) is "OFF" unless you press the lower half of the first Vibrato Control tablet to the "ON" position. The positions of the next two tablets determine the degree of Vibrato Speed and Depth as indicated on the tablets.

For your favorite hymns and other church or classical music, you will find the 4100 Organ tone excellent without Vibrato. The popular organist will use a great deal of vibrato and the classical organist, little. Your 4100 Organ can provide any vibrato effect for any type of music. Experiment with the Vibrato controls to find the effects you like best for the different types of music you play.



KEYBOARD COUPLERS AND SUSTAIN (PERCUSSION) CONTROLS

THE COUPLERS

In organ terminology, to "couple" is to join and/or transfer a tonality at a specified pitch . . . This is done within a keyboard or from one keyboard to another by means of Coupler Controls.

Unlike any other organ in its price range, the Model 4100 Organ offers inter-manual and intra-manual Couplers in the 16', 8' and 4' range. For convenience of operation, the Coupler tablets are placed to the left of the upper keyboard. The Couplers provide additional combinations to the already great resources of tonalities and pitches on each keyboard.



The four Coupler tablets and the five controls for the 8' tonalities of the upper keyboard are inscribed in red. This is a visual reminder of the fact that the Couplers control the five 8' tonalities of the upper keyboard.

by means of Couplers you can---

- 1 play on the upper keyboard, individually or combined, the 16' and 4' pitches of the 8' voices—Flute, Diapason, String, Trumpet, Oboe.
- 2 play on the lower keyboard at the 8' pitch the 8' voices of the upper keyboard, alone or in combination with voices of the lower keyboard. In effect, this adds five tonalities to the extensive resources of the lower keyboard.
- 3 play on the lower keyboard any or all of the 8' voices of the upper keyboard while playing on the upper keyboard a melody using any 16', 5 1/3' and/or 4' voice without the 8' tonality being included in the combination.
- 4 use the 8' Solo Control of the upper keyboard in conjunction with the Couplers to produce the increased intensity the Solo Control offers.

The coupling system of your Wurlitzer Organ provides exceptional tonality extension and has been designed for the greatest versatility in playing. It literally adds ten additional individual tonalities at different pitches to the resources of the upper keyboard, as well as five additional tonalities to the lower keyboard, with two intensities of each.

UPPER TO UPPER 16'—With this control you automatically add, or couple, to the 8' registration being played on the upper keyboard, the 16', or octave lower, pitch of the same tonality.

UPPER TO UPPER 4'—With this control you automatically add, or couple, to the 8' registration being played on the upper keyboard, the 4', or octave higher, pitch of the same tonality.

UPPER 8' OFF—By using this control with an 8' voice on the upper keyboard, you automatically remove the sound of the 8' pitch itself. This is useful when you want *only* the 16' and/or 4' pitch of any of the 8' voices (Flute, Diapason, String, Trumpet, Oboe). This is accomplished by using Upper to Upper 16' with Upper 8' Off for 16' and/or Upper to Upper 4' with Upper 8' Off for 4'.

UPPER TO LOWER 8'—With this control you automatically add, or couple, to the lower keyboard at the 8' (unison) pitch all of the 8' registrations set on the upper keyboard. Also, by using the "Upper 8' Off" Control you can play a solo on the upper keyboard using the 16', 5 1/3' and/or 4' voice with an accompaniment on the lower keyboard (by means of the Upper to Lower 8' coupler) using the tonalities of any of the upper keyboard 8' voices.

In addition to augmenting the organ and orchestral voices, the Couplers are also used in connection with many percussion effects, described on the following page.

PERCUSSION BY WURLITZER—KEYBOARD SUSTAIN CONTROLS

The two red Sustain Control tablets to the left of the upper keyboard permit you to create a whole range of new effects. You can add color and variety to your playing with such percussion effects as the Hawaiian guitar, marimba, harp, glockenspiel, and many others. The church organist can obtain inspiring effects by weaving into the music of the service harp, bells, celeste and chime accompaniments for more reverent liturgical music.

Each percussion voice can be expressed as melody notes or full chords, loud or soft, with or without vibrato. When playing the different percussion instrumental effects, it is best to play staccato or detached. The response of Wurlitzer Sustain is "natural" — tones ring on after fingers are removed from the keys, just as a bell continues to ring after it has been struck. If you think of the sound of the percussion instrument that you are creating, your fingers will just naturally achieve the touch desired.

Unbelievable reverberation (echo) qualities can also be obtained with your new Wurlitzer Model 4100 Organ through the use of the Sustain Controls. For echo effects, hold the keys down a bit longer to create the reverberation sounds of an echo, or the "feeling of space" — as though sound were being produced in a large auditorium.

In designing the Model 4100, Wurlitzer engineers placed in the 8' range of the upper keyboard those tonalities which can be best utilized to produce percussion effects. By so doing, the greatest versatility was achieved — percussion effects at 8', 16' and 4' pitches independent of other tonalities at these same pitches, played individually or in combination, on either or both keyboards, explained in detail below.

The tonalities of the upper keyboard are divided into 2 sections, as far as being affected by Sustain (percussion) is concerned:

- | | |
|--|---|
| 1 All 8' voices (lettered in red) | 2 All other voices—16', 5 1/3', 4' (lettered in black) |
| — Affected by Sustain | — Not affected by Sustain. |

Note that there is, in addition to an On-Off Control for the Sustain, a Control governing the length of Sustain — Medium or Long — determined by the position of the tablet.

Solo Control for upper keyboard 8' voices and Couplers for these voices serve the same functions when played in conjunction with Sustain Controls.

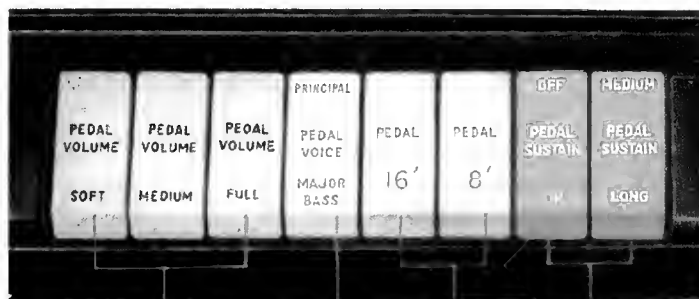
By means of the Sustain (percussion) Controls, which affect all 8' voices on the upper keyboard, you can:

- 1** Produce a wealth of percussion instrumental effects. . . . See Musical Guide Book and Suggested Registration Card in Owner's Kit for Automatic Tone Control settings.
- 2** Sustain any or all 8' voices (Flute, Diapason, String, Trumpet, Oboe) on the upper keyboard.
- 3** Sustain upper keyboard 8' voices in combination with their 16' and/or 4' pitches (through use of the Upper to Upper 16' and/or Upper to Upper 4' Coupler).
- 4** Produce percussion effects on the upper keyboard at only the 16' and/or 4' pitch from the 8' voices of the upper keyboard (through the use of the Upper 8' Off Coupler and the Upper to Upper 16', and/or Upper to Upper 4', Coupler).
- 5** Play upper keyboard percussion voices at the 8' pitch (with Upper to Upper 16' and/or 4' Coupler if desired) in combination with non-percussive voices at the 16', 5 1/3' and/or 4' pitch.
- 6** Play percussion effects on the lower keyboard or on both keyboards at the same time (through use of the Upper to Lower 8' Coupler).
- 7** Play a non-percussion melody on the upper keyboard with accompaniment employing a percussion effect on the lower keyboard (by using the Upper 8' Off Coupler, to remove the percussion effects from the upper keyboard, and the Upper to Lower 8' Coupler, you play percussion on the lower keyboard only . . . while playing a non-percussion melody on the upper keyboard using 16', 5 1/3', and/or 4' voices).

A book showing musical examples of percussion and other effects is a part of your Wurlitzer Organ Owner's Kit. You are by no means limited to these, however . . . by experimenting, you will develop many other beautiful tones and distinctive special effects of your own. Use the percussion and echo effects in any music you play — popular, classical, ballads, marches — you'll enjoy this wonderful feature of your Wurlitzer Organ the more you use it.

THE PEDAL CONTROLS

The eight Pedal Control tablets at the left end of the upper row of your Model 4100 Organ offer you a total of 72 pedal settings — the most versatile pedal in the spinet organ field.



Three Pedal Volume Control Tablets . . .
govern the volume of the pedal tones in relation to the keyboard tones. Use the Soft, Medium or Full Pedal Volume Control according to whether you want the pedal tones subdued, balanced or dominant. Although there are three Pedal Volume Control tablets, there are actually four pedal intensities The softest possible pedal tone is obtained when all the Pedal Volume Controls are in "Off" position. **Soft** Pedal Volume is used most often for soft classical or liturgical music without pronounced rhythm. You might use the **Medium** Pedal Volume for dance tunes or popular songs with strong rhythm. The **Full** Pedal Volume would be used when you were playing a passage where you increase keyboard volume and add voices.

The Pedal Voice Control . . .
Offers you a choice of two voices (Principal and Major Bass) for each pitch — each produces an entirely different sound, making possible a wider range of pedal tones. In normal position, the "Principal" tonality is heard; when depressed, the "Major Bass" tonality is heard.

Two Pedal Sustain Control Tablets . .
offer you two lengths of Sustain (Medium and Long) for the pedal tonalities. These provide a legato or sustained flow of pedal tones which enhances the pedal section for certain types of music. The effect created by using a Sustain Control might be compared to that of a string boss being bowed, in contrast to its being "stopped" or played pizzicato — the effect obtained when no Pedal Sustain is used. This latter effect is desirable for music with a pronounced rhythm such as dance tunes or marches.

Two Pedal Pitch Tablets . . .
control the pitch of pedal tones One of these must be depressed before sound can be obtained from the pedal keyboard. The 8' Pedal Pitch has the character of the full-bodied tones of the String Bass section of the orchestra and the true 16' Pedal Pitch is like the deeper sounding Double Bass section. The Pedal Pitch Controls may be used singly or in combination for greatest variety.

MASTER VOLUME CONTROL

The Master Volume Control on your Wurlitzer 4100 Organ is conveniently located at the left-hand side of the lower row of tablets. This control governs the over-all volume of both keyboards and pedals. It makes possible the increase or decrease of volume as desired to fit the occasion, location of organ or music being played. This Control also makes possible a wider range of tone shading. A flick of the finger changes the over-all volume of the organ from soft to full orchestral crescendo.



CARE OF YOUR ORGAN

Your organ console and bench are manufactured from selected woods that are air dried as well as kiln dried in Wurlitzer U. S. Government Approved Kilns. They will last indefinitely if given reasonable care. The wood is carefully sealed, stained and has successive coats of lacquer which are individually hand-rubbed to a satin finish. Treat the finish as you would any other fine furniture in your home, church or school. Use a good grade of wax-base furniture polish, and the inbred beauty of your organ console and bench will last for many, many years. Before polishing, always wipe off the dust lightly with a soft cloth to avoid minute scratches. Dampness or water affects the finish of any fine furniture if permitted to stand. Never use a cloth dampened with water;

it is unnecessary because a good polish enhances the appearance and preserves the satin finish.

The Volume Pedal is covered with a rubber composition which is cleaned by merely wiping with a damp cloth. The automatic tone controls and pedal keys are made from durable moulded plastic and are also easily cleaned with a soft damp cloth.

The white and black keys of your Wurlitzer Organ are made of moulded, urea plastic of the highest quality. They will not burn, catch fire or discolor. To keep them looking like new, simply wipe off with a soft, damp cloth. Each key is individually removable. In the event of unavoidable damage, replacements are inexpensive and can easily be installed.

SUGGESTIONS FOR MAINTENANCE

Wurlitzer Organ Dealers are found in every trading area in the United States, in Canada, and throughout the world. The Wurlitzer factory supplies all Dealers with complete technical information and they carry a supply of service parts so they can serve your requirements through the years. The Company also operates Factory Training Schools for Organ Technicians and has graduated hundreds who are authorized to give Wurlitzer Organ Service. Always consult a Wurlitzer Organ Dealer for service; unnecessary charges will be avoided if

the instrument is serviced by an authorized dealer. The Factory has established a high standard for maintenance of your Organ. Be sure to read carefully the Warranty, printed on page 15 of this booklet.

The standard Wurlitzer Model 4100 Organ operates on 60-cycle alternating current, 115 volts. The total wattage consumption is comparable to radio-phonograph or television sets. The organ is installed by merely plugging in the heavy-duty rubber electric cord provided for connection to a wall socket.

If the organ does not operate when the starting switch is turned "ON," the following should be checked:

- 1 See that the organ power cord plug is firmly connected to the wall 115-volt A.C. 60-cycle socket.
- 2 Check the house fuses to make certain that one is not blown out.
- 3 Check the organ fuses. Ask your Dealer to familiarize you with the location. It is readily accessible without removing the back from the console.

MOVING YOUR ORGAN

If you should change your residence, we suggest you notify your Wurlitzer Dealer; he will gladly advise proper handling. If you move to another city, contact the Wurlitzer Organ Dealer there.

ACCESSORIES

MUSIC LAMPS

Many appropriate music desk lamps are available for use with your Wurlitzer Organ. Your dealer will be happy to show you the different types. If you do not desire a music desk lamp, brass or crystal lamps might better suit the decor of your setting.

COVERS

A special cover of flexible, but durable, material is available from your Wurlitzer Organ Dealer for use by churches or any other owner who finds it necessary to keep the instrument covered for any length of time to protect it from damage. The cover has two heavy duty zippers which are equipped with lock latches to which small padlocks can be fastened. In order to avoid duplications, the locks and keys can be purchased through your local hardware store.

CHIMES

Many of the newest chimes for homes are electronic, rather than the tubular type found in larger installations. The electronic chime unit is small and compact and can be placed on the right side of the organ, within easy reach. It contains a complete sound system of its own, with a self-contained speaker that will blend pleasingly with the tone from the organ speaker. Wurlitzer does not manufacture chimes but recommends that you see your Wurlitzer Organ Dealer for details.

PHONO INPUT

An input plug is available on the Wurlitzer Model 4100 Organ for plugging in record players to play favorite recordings through the high-fidelity sound system of the Wurlitzer Organ.

EARPHONE JACK

Earphones are available as an accessory and, when plugged in, automatically cut off all sound except that heard through the earphones. Ideal when others are watching TV or doing homework. Permits playing without disturbing anyone.



WURLITZER ORGAN

Manufacturer's Warranty

Your Wurlitzer Organ is warranted against defects in material or workmanship for the period of one year from the date of delivery by the dealer to the first retail purchaser, with the exception of tubes and speakers which are covered by warranty of their respective manufacturers.

Liability under this Warranty shall be to the dealer and said purchaser only, and shall be fully discharged by the repair at the Wurlitzer factory or at any other service station or dealer that may be designated by Wurlitzer, or the replacement F.O.B. factory of any part or parts which, given proper care, prove within that time to be defective. Any transportation charges shall be borne and prepaid by the purchaser.

This express Warranty excludes all implied warranties, and no promise or representation inconsistent herewith, which may be made by any person, firm or corporation, shall be binding upon The Wurlitzer Company.

**THE WURLITZER COMPANY
DE KALB, ILLINOIS**

The finest of materials and workmanship have been incorporated in your new Wurlitzer Organ.

To protect your Warranty, fill in and mail within TEN DAYS after purchase the Warranty Registration Card that you will find attached to the organ. Returning this card protects you, within the limits of and in accordance with the terms of the Warranty shown on this page, against any possible defects in such material and workmanship.

This splendid instrument should give you many years of musical enjoyment. The Company reserves the right to make any changes in or improvements on its products without incurring any liability or obligation whatever, and without being required to make any corresponding changes or improvements on products theretofore manufactured or sold.

*Be sure to mail
your Warranty Registration Card
TODAY.*



Special Music for WURLITZER ORGANS

Anyone can learn to play the Wurlitzer Organ at home, using the new simplified courses which have been published for Wurlitzer Organs. If you have time, however, it is well to take instruction from an experienced teacher.

Because your Wurlitzer Organ is standard in every respect, you are free to introduce any organ music you desire into your library. However, a vast amount of classical, semi-classical, and popular music has been interestingly arranged and registered for your Wurlitzer Organ. These publications, both in collections and solo, are available wherever you buy your music.

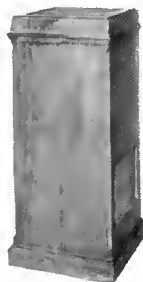
HIGH-FIDELITY TONE CABINETS for your WURLITZER ORGAN

Four great Tone Cabinets acoustically engineered by Wurlitzer sound experts to achieve additional and balanced coverage for installations from the smallest home to the largest cathedral. Any of these Tone Cabinets may be used on your Wurlitzer Organ, singly or in any combination. Vertical and horizontal types, for every installation, each of these high-fidelity Tone Cabinets faithfully covers the entire audio range, assuring the *finest* in organ music.



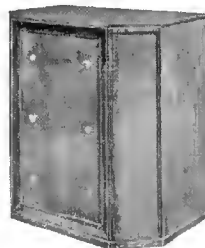
300

In Mahogany, Walnut, Blond Oak, Ebony and Cherry. 25" wide, 11 $\frac{1}{8}$ " deep, 26 $\frac{1}{4}$ " high. Special effect utilizes Doppler principle.



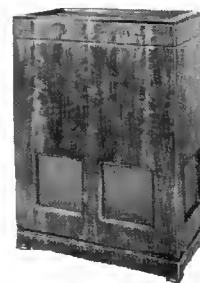
400

In Mahogany or Walnut. 20 $\frac{1}{4}$ " wide, 19 $\frac{1}{2}$ " deep, 47" high. 20-watt speaker output.



626

In Mahogany, Walnut or Oak. 36" wide, 23 $\frac{3}{4}$ " deep, 40" high. 40-watt speaker output.



800

Mahogany, Walnut or Oak. 34 $\frac{1}{2}$ " wide, 19 $\frac{1}{4}$ " deep, 47" high. 40-watt speaker output.

Owner's Name _____

Address _____

City _____

State _____

Organ Model _____

Serial No. _____

Finish _____

Date Purchased _____

From _____

Accessories _____



WURLITZER

WORLD'S LARGEST BUILDER OF PIANOS AND ORGANS

FORM 482
PART No. 500981

LITHO IN U.S.A.